



SCHEMATICS

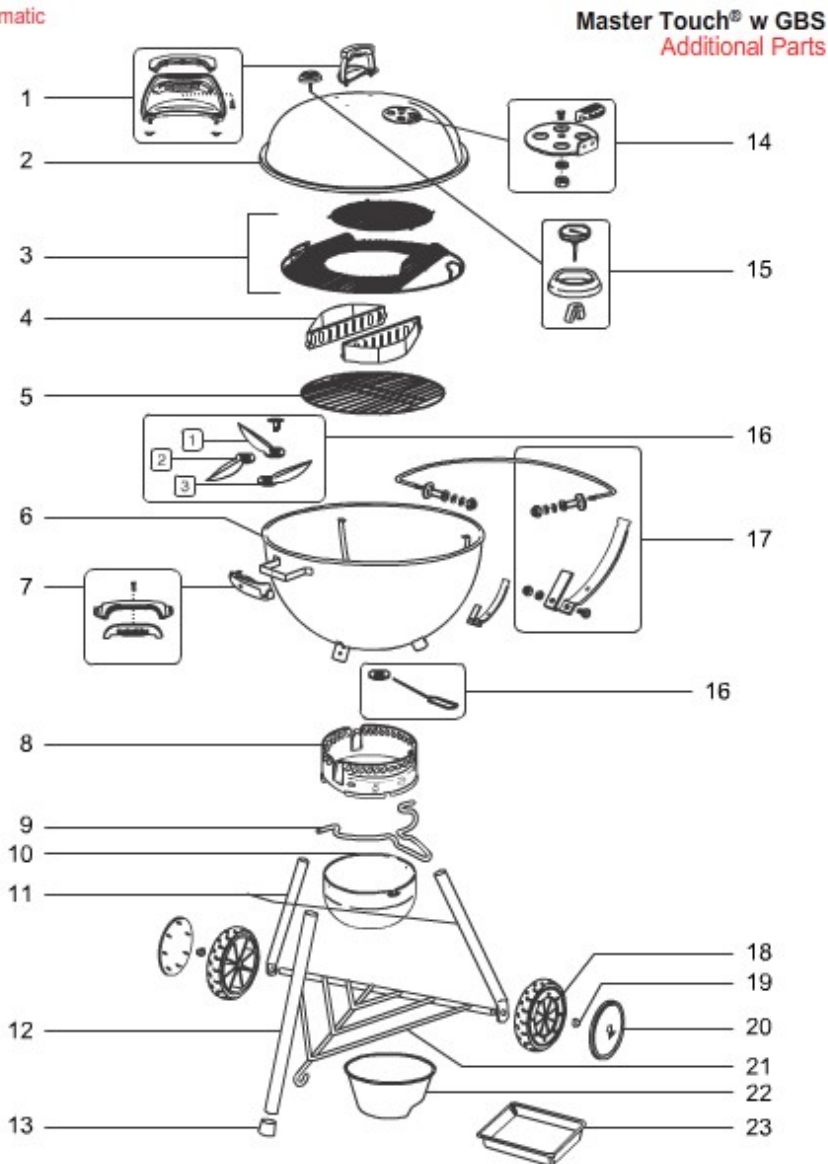
CUSTOMER SERVICE
1-800-446-1071

Export (general) / Charcoal / Master-Touch

[VIEW ALL](#)

MODEL #: 14501004 DESCRIPTION: MASTER-TOUCH 57CM BLK W/GBS (2014) (EUROPE)

[Print Schematic](#)



04.14

| SEQ | DESCRIPTION | PART# |
|-----|--------------------------------------|-------|
| A | Assembly Guide, Master-Touch, EU '15 | 57861 |
| A | Charcoal Owners Guide, export '15 | 57882 |
| A | Brochure, Gourmet Barbecue System | 56232 |
| W | Hardware kit, Master-Touch '15 | 91733 |
| W | Hardware, legs '15 | 91732 |

| | | |
|----|---|-------|
| 1 | Handle kit w/shield, black, '15 | 60037 |
| 2 | Lid assembly, 22.5" Master-Touch, smoke '15 | 65151 |
| 2 | Lid assembly, 22.5" Master-Touch, spring green '15 - export | 65152 |
| 2 | Lid assembly, 22.5" Master-Touch, slate, '15 | 65153 |
| 2 | Lid assembly, 22.5" Performer/Master-Touch, black '15 | 65147 |
| 2 | Lid assembly, 22.5" Performer/Master-Touch, copper '15 | 65148 |
| 2 | Lid assembly, 22.5" Performer/Master-Touch, crimson '15 | 65149 |
| 2 | Lid assembly, 22.5" Master-Touch, ivory '15 | 65150 |
| 3 | 22.5" cooking grate w/opening for insert | 63077 |
| 3 | Wire insert for 22.5" cooking grate | 63075 |
| 4 | Char-Basket assembly (qty. 1) | 62423 |
| 5 | Charcoal grate for 22" kettle | 65947 |
| 6 | Bowl, 22.5" Master-Touch, black '15 | 65154 |
| 7 | Bowl, 22.5" Master-Touch, crimson '15 | 65156 |
| 7 | Bowl, 22.5" Master-Touch, smoke '15 | 65158 |
| 7 | Bowl, 22.5" Master-Touch, copper '15 | 65155 |
| 7 | Bowl, 22.5" Master-Touch, slate '15 | 65160 |
| 7 | Bowl, 22.5" Master-Touch, ivory '15 | 65157 |
| 7 | Bowl, 22.5" Master-Touch, spring green '15 | 65159 |
| 7 | Handle kit w/tool hooks (black), '13 | 60038 |
| 8 | Ash catcher assembly, 22.5", black (for grills with GBS) | 65162 |
| 8 | 22.5" Ash catcher ring, '15 | 65190 |
| 9 | 22.5" Ash catcher handle '15 | 65195 |
| 9 | Ash catcher assembly, 22.5", black (for grills with GBS) | 65162 |
| 10 | Ash catcher assembly, 22.5", black (for grills with GBS) | 65162 |
| 10 | Ash catcher bowl | 65196 |
| 11 | Spring clip (set of 3) | 65183 |
| 11 | Leg kit, Master-Touch '15 | 65133 |
| 12 | Leg kit, Master-Touch '15 | 65133 |

| | | |
|-----|--|--------|
| 12 | Spring clip (set of 3) | 65183 |
| 13 | Hardware, legs '15 | 91732 |
| 14 | Damper kit, '10 | 63070 |
| 14 | Handle for lid damper, molded, black | 63048 |
| 15 | Bezel for thermometer, Charcoal | 63027 |
| 15 | Thermometer, Q, Spirit, Charcoal '14, Export | 74239 |
| 16 | One-Touch cleaning kit, 22" | 90720 |
| 17 | Lid bale, brackets with hardware, Performer | 63058 |
| 18 | 8" Wheel w/insert '15 | 65144 |
| 19 | Replacement hubcaps (pack of 3) | 987101 |
| 20 | Wheel insert (Set of 2) | 65428 |
| 21 | Triangle for 22" One-Touch, black, '10 | 80676 |
| 22 | Measuring cup, black | 80664 |
| 23 | Large drip pan, single | 93100 |
| 410 | Brochure, Gourmet Barbecue System | 56232 |
| 410 | Charcoal Owners Guide, export '15 | 57882 |
| 410 | Assembly Guide, Master-Touch, EU '15 | 57861 |
| 470 | Hardware kit, Master-Touch '15 | 91733 |
| 470 | Hardware, legs '15 | 91732 |

53 Items Found

[SCROLL TO TOP](#)

[View All](#)