



SCHEMATICS

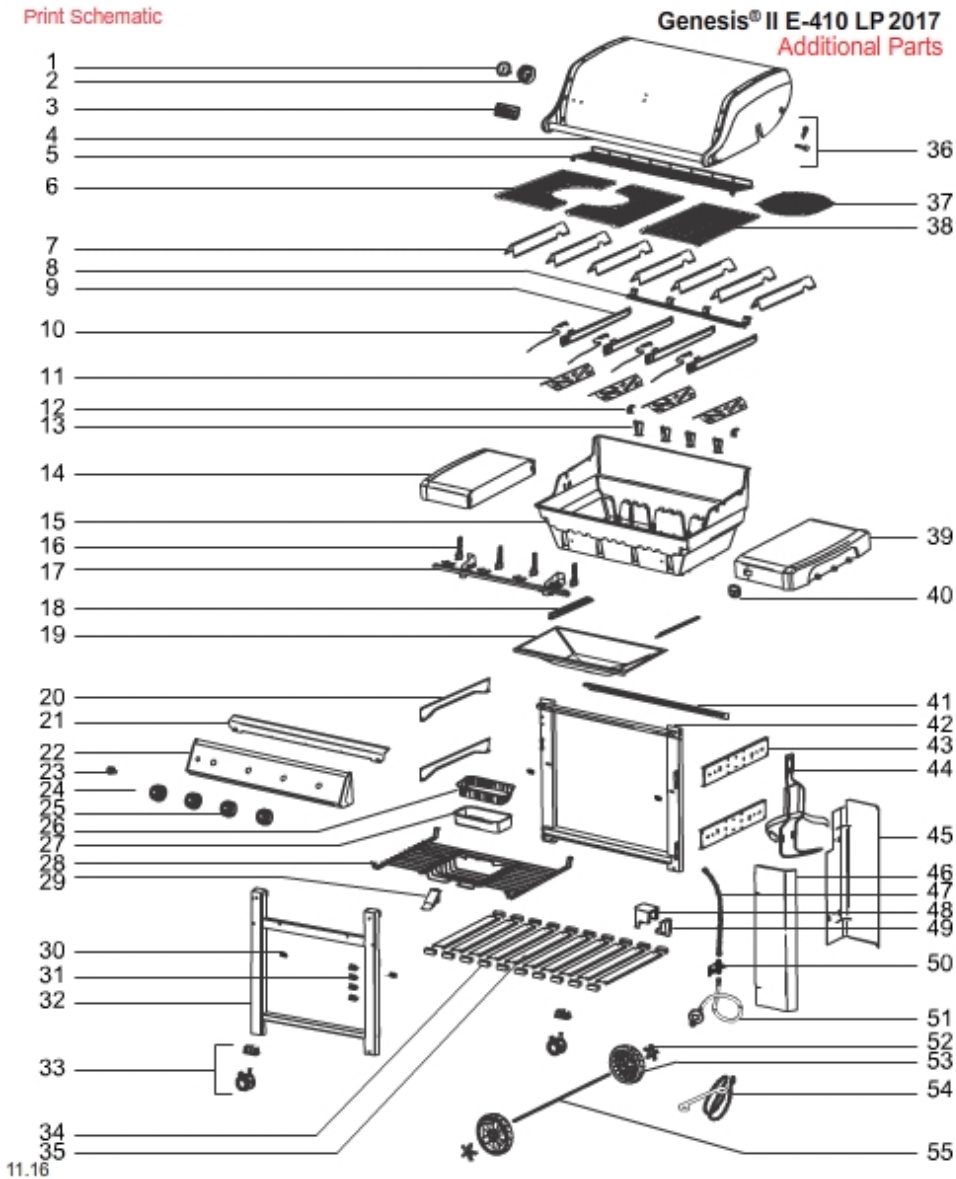
CUSTOMER SERVICE
1-800-446-1071

Switzerland / Gas / Genesis II (2017)

[VIEW ALL](#)

MODEL #: 62010175 DESCRIPTION: GENESIS II E-410 LP W/GBS BLK (2017) (CENTRAL EUROPE)

[Print Schematic](#)



SEQ	DESCRIPTION	PART#
A	Literature kit, Genesis II LP, export '17	41074105
B	Lid hardware, Genesis II E/SE series	66060
B	Boot valve, Genesis II E/SE series (set of 2)	66310
B	Hardware, cookbox, Genesis II E/SE series	66824
B	Hardware bag G, igniter module, Genesis II E/SE series	72971

B	Hardware bag I, Genesis II tank hanger	72973
B	Hardware bag E, Genesis II LHS fixed table	72969
B	Hardware kit, Genesis II E-410/610 LP, export	73219
B	Zinc wrench	72974
B	Hardware, frame/tank hanger, Genesis II/LX	66680
B	Hardware bag A, frame/wheel, Genesis II E/SE series	72965
B	Hardware bag D, Genesis II RHS fixed table	72968
B	Hardware, tank panel buttons	66679
B	Hardware, cookbox rails/brackets, Genesis II/LX series	66683
B	Hardware, manifold, Genesis II E/SE series	66678
B	Hardware, wheel, Genesis II E/SE series	66682
1	Thermometer, Genesis/Summit, export '14	70014
2	Thermometer bezel, Genesis	66049
3	Weber logo	66282
4	Lid assembly, Genesis II E/SE-410, black	66055
4	Lid assembly, Genesis II E/SE-410, smoke	66058
4	Lid bumpers, Genesis II (qty 2)	66061
5	Warming rack, Genesis II 410	66045
6	Gourmet BBQ System porcelain enameled cast iron cooking grates, 400 series, export	66093
7	Porcelain enameled flavorizer bars, Genesis II E-410 (qty 7)	66033
8	Crossover tube, Genesis II 400 series, export '17	66168
9	Burner tube kit, 29 mb, Genesis II 400 series (qty 2)	66775
10	Igniter electrode w/wire, 27", yellow	66833
10	Igniter electrode w/wire, 51", blue	66364
10	Igniter electrode w/wire, 46", green	66363
10	Igniter electrode w/wire, 36", black	66362
11	Heat deflector set, Genesis II E/SE-410 (qty 4)	66041
12	Warming mounting bracket set, Genesis II E/SE series (qty 2)	66046
12	Hardware, cookbox rails/brackets, Genesis II/LX series	66683

13	Hardware, cookbox rails/brackets, Genesis II/LX series	66683
13	Burner tube kit, export (qty 2)	66514
14	LHS fixed table, Genesis II	66370
14	Zinc wrench	72974
14	Hardware bag E, Genesis II LHS fixed table	72969
15	Hardware, cookbox rails/brackets, Genesis II/LX series	66683
15	Hardware, manifold, Genesis II E/SE series	66678
15	Cookbox, Genesis II/LX 400 series, export '17	66162
15	Hardware, cookbox, Genesis II E/SE series	66824
16	Ignition wire clip square set (qty 2)	66360
16	Ignition wire clip round set (qty 2)	66357
17	Manifold assembly, LP, 29 mb, Genesis II 400 series, export	66299
17	Hardware, manifold, Genesis II E/SE series	66678
18	Hardware, cookbox rails/brackets, Genesis II/LX series	66683
18	Bottom tray rails, Genesis II E/SE series	66028
19	Grease tray, Genesis II/LX E/SE-410/440	66037
20	LHS frame connector, Genesis II E/SE series	66219
20	Hardware, frame/tank hanger, Genesis II/LX	66680
21	Hardware, frame/tank hanger, Genesis II/LX	66680
21	Top trim for control panel, SS, Genesis II/LX 400 series	66230
22	Control panel assembly, Genesis II E/SE-210/410	66255
22	Hardware, frame/tank hanger, Genesis II/LX	66680
23	Momentary/light switch, Genesis II E/SE series	66220
24	Igniter light switch wire, Genesis II E/SE-410	66377
25	Control knob kit, Genesis II E/SE series	66048
26	Aluminum drip pans - package of 10	6417
27	Catch pan kit	70379
28	Wire rack, Genesis II E/SE-410	66172
29	Catch pan retainer/lock, Genesis II E/SE series	66174

30	Wire rack bushing set, Genesis II E/SE series (qty 4)	66175
31	Igniter wire clip set, Genesis II E/SE series (qty 4)	66368
32	Front frame, Genesis II 400 series, export	66235
32	Hardware, frame/tank hanger, Genesis II/LX	66680
33	Locking caster w/insert, Genesis II E/SE series	66250
34	Bottom slat mounting bracket set, Genesis II E/SE series (qty 2)	66066
35	Bottom slat set, Genesis II E/SE series (qty 2)	66068
35	Bottom slat, single w/label, Genesis II LP, export	66067
36	Lid hardware, Genesis II E/SE series	66060
37	PECI cooking grate insert, Spirit w/GBS	64830
38	Gourmet BBQ System porcelain enameled cast iron cooking grates, 400 series, export	66093
39	iGrill Plugs, Genesis II E/SE series (qty 2)	66347
39	RHS fixed table, Genesis II E/SE series	66343
39	Zinc wrench	72974
39	Hardware bag D, Genesis II RHS fixed table	72968
40	iGrill cover, Genesis II E/SE series	66344
41	Rear frame top trim, Genesis II E/SE-410	66223
41	Hardware, frame/tank hanger, Genesis II/LX	66680
42	Hardware, frame/tank hanger, Genesis II/LX	66680
42	Rear frame, Genesis II 400 series, export	66243
43	RHS frame connector, Genesis II E/SE series (qty 1)	66218
43	Hardware, frame/tank hanger, Genesis II/LX	66680
44	Hardware, frame/tank hanger, Genesis II/LX	66680
44	Tank hanger w/strap, Genesis II LX series, export	66257
44	Tank hanger strap w/clasp, export	66258
45	Rear tank enclosure panel, Genesis II, export	66217
45	Hardware, tank panel buttons	66679
46	Hardware, tank panel buttons	66679
46	Front tank panel, Genesis II E/SE series	66225

47	Corrugated gas line, Genesis II E/SE-410/610	66165
48	Igniter module cover, Genesis II 210/310/410	66358
49	Igniter kit, Genesis II E/SE-410	66355
49	Igniter module, Genesis II 310/410/340/440	66260
50	Bulkhead assembly, Genesis II 400/600 series, export	66208
50	Hardware, frame/tank hanger, Genesis II/LX	66680
51	Not supplied by Weber	22222
52	Wheel insert kit, Genesis II/LX	66252
53	Wheel assembly w/insert, Genesis II E/SE series	66249
54	Match stick holder, Genesis II E/SE-410/610	66346
55	Axle w/hardware, Genesis II E/SE series	66251
55	Hardware, wheel, Genesis II E/SE series	66682

104 Items Found

[SCROLL TO TOP](#)

[View All](#)