



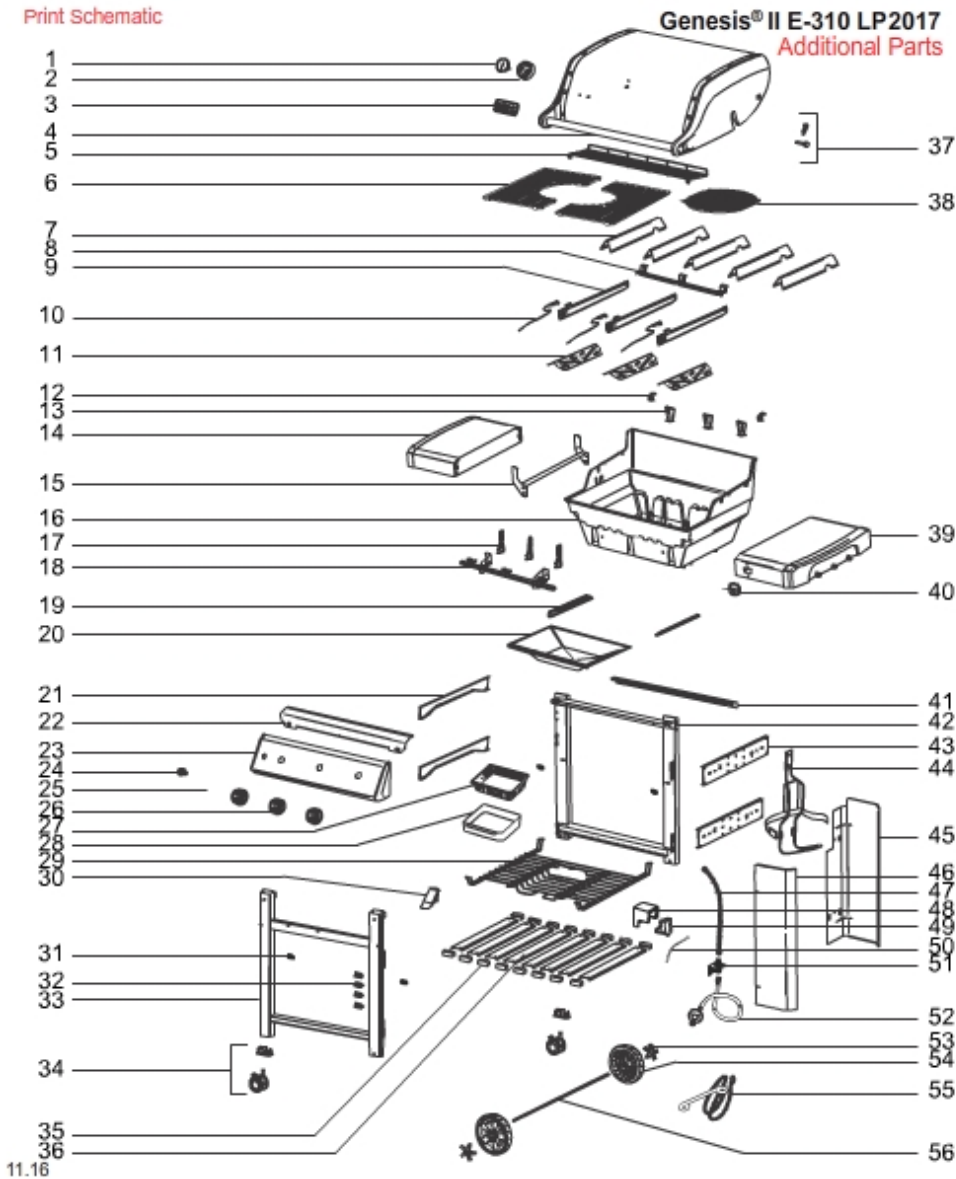
SCHEMATICS

CUSTOMER SERVICE
1-800-446-1071

Switzerland / Gas / Genesis II (2017)

[VIEW ALL](#)

MODEL #: 61010175 DESCRIPTION: GENESIS II E-310 LP W/GBS BLK (2017) (CENTRAL EUROPE)



SEQ	DESCRIPTION	PART#
A	Literature kit, Genesis II LP, export '17	41074105
B	Boot valve, Genesis II E/SE series (set of 2)	66310
B	Lid hardware, Genesis II E/SE series	66060
B	Hardware, cookbox rails/brackets, Genesis II/LX series	66683
B	Hardware, wheel, Genesis II E/SE series	66682

B	Hardware, manifold, Genesis II E/SE series	66678
B	Hardware, frame/tank hanger, Genesis II/LX	66680
B	Hardware, tank panel buttons	66679
B	Zinc wrench	72974
B	Hardware bag G, igniter module, Genesis II E/SE series	72971
B	Hardware bag I, Genesis II tank hanger	72973
B	Hardware bag F, Genesis II E-210/310 pivot table	72970
B	Hardware kit, Genesis II E-210/310 LP, export	73217
B	Hardware bag D, Genesis II RHS fixed table	72968
B	Hardware bag A, frame/wheel, Genesis II E/SE series	72965
B	Hardware, cookbox, Genesis II E/SE series	66824
1	Thermometer, Genesis/Summit, export '14	70014
2	Thermometer bezel, Genesis	66049
3	Weber logo	66282
4	Lid bumpers, Genesis II (qty 2)	66061
4	Lid assembly, smoke, Genesis II 300 series, export	66054
4	Lid assembly, Genesis II E-310, black	66053
5	Warming rack, Genesis II E-310	66044
6	Gourmet BBQ System porcelain enameled cast iron cooking grates, 300 series, export	66091
7	Porcelain enameled flavorizer bars, Genesis II E-310 (qty 5)	66032
8	Crossover tube, Genesis II 300 series, export '17	66167
9	Burner tube kit, 29 mb, Genesis II 300 series (qty 3)	66773
9	Burner tube kit, 29 mb, Genesis II 300 series (qty 2)	66774
10	Igniter electrode w/wire, 27", yellow	66833
10	Igniter electrode w/wire, 36", black	66362
10	Igniter electrode w/wire, 46", green	66363
11	Heat deflector set, Genesis II E-310 (qty 3)	66040
12	Hardware, cookbox rails/brackets, Genesis II/LX series	66683
12	Warming mounting bracket set, Genesis II E/SE series (qty 2)	66046

13	Hardware, cookbox rails/brackets, Genesis II/LX series	66683
13	Burner tube kit, export (qty 2)	66514
14	LHS pivot table, Genesis II, export	66372
15	Hinge bracket for pivot table, Genesis II E-210/310	66348
15	Hardware bag F, Genesis II E-210/310 pivot table	72970
16	Hardware, cookbox, Genesis II E/SE series	66824
16	Hardware, cookbox rails/brackets, Genesis II/LX series	66683
16	Hardware, manifold, Genesis II E/SE series	66678
16	Cookbox, Genesis II/LX 300 series, export '17	66161
17	Ignition wire clip square set (qty 2)	66360
17	Ignition wire clip round set (qty 2)	66357
18	Hardware, manifold, Genesis II E/SE series	66678
18	Manifold assembly, LP, 29 mb, Genesis II 300 series, export	66298
19	Bottom tray rails, Genesis II E/SE series	66028
19	Hardware, cookbox rails/brackets, Genesis II/LX series	66683
20	Grease tray, Genesis II E-310/340	66036
21	LHS frame connector, Genesis II E/SE series	66219
21	Hardware, frame/tank hanger, Genesis II/LX	66680
22	Hardware, frame/tank hanger, Genesis II/LX	66680
22	Top trim for control panel, SS, Genesis II/LX 300 series	66229
23	Hardware, frame/tank hanger, Genesis II/LX	66680
23	Control panel assembly, Genesis II E-310	66254
24	Momentary/light switch, Genesis II E/SE series	66220
25	Igniter button wire, Genesis II E-310	66376
26	Control knob kit, Genesis II E/SE series	66048
26	Control knob kit, Genesis II 310/610	66047
27	Aluminum drip pans - small	6415
28	Catch pan kit	83156
29	Wire rack, Genesis II E-310	66171

30	Catch pan retainer/lock, Genesis II E/SE series	66174
31	Wire rack bushing set, Genesis II E/SE series (qty 4)	66175
32	Igniter wire clip set, Genesis II E/SE series (qty 4)	66368
33	Front frame, Genesis II 300 series, export	66234
33	Hardware, frame/tank hanger, Genesis II/LX	66680
34	Locking caster w/insert, Genesis II E/SE series	66250
35	Bottom slat mounting bracket set, Genesis II E/SE series (qty 2)	66066
36	Bottom slat, single w/label, Genesis II LP, export	66067
36	Bottom slat set, Genesis II E/SE series (qty 2)	66068
37	Lid hardware, Genesis II E/SE series	66060
38	PECI cooking grate insert, Spirit w/GBS	64830
38	RHS fixed table, Genesis II E/SE series	66343
39	iGrill Plugs, Genesis II E/SE series (qty 2)	66347
39	Hardware bag D, Genesis II RHS fixed table	72968
39	Zinc wrench	72974
40	iGrill cover, Genesis II E/SE series	66344
41	Hardware, frame/tank hanger, Genesis II/LX	66680
41	Rear frame top trim, Genesis II E-310	66222
42	Rear frame, Genesis II 300 series, export	66242
42	Hardware, frame/tank hanger, Genesis II/LX	66680
43	Hardware, frame/tank hanger, Genesis II/LX	66680
43	RHS frame connector, Genesis II E/SE series (qty 1)	66218
44	Hardware, frame/tank hanger, Genesis II/LX	66680
44	Tank hanger strap w/clasp, export	66258
44	Tank hanger w/strap, Genesis II LX series, export	66257
45	Hardware, tank panel buttons	66679
45	Rear tank enclosure panel, Genesis II, export	66217
46	Front tank panel, Genesis II E/SE series	66225
46	Hardware, tank panel buttons	66679

47	Corrugated gas line, Genesis II E-210/310	66164
48	Igniter module cover, Genesis II 210/310/410	66358
49	Igniter module, Genesis II 310/410/340/440	66260
49	Igniter kit, Genesis II E-310	66354
50	Ground wire, blue, 28.25", Genesis II LX	66834
51	Hardware, frame/tank hanger, Genesis II/LX	66680
51	Bulkhead assembly, Genesis II LX 200/300 series, export	66206
52	Not supplied by Weber	22222
53	Wheel insert kit, Genesis II/LX	66252
54	Wheel assembly w/insert, Genesis II E/SE series	66249
55	Match stick holder, Genesis II E-210/310	66345
56	Axle w/hardware, Genesis II E/SE series	66251
56	Hardware, wheel, Genesis II E/SE series	66682

105 Items Found

[SCROLL TO TOP](#)

[View All](#)